

Leschi

Display Model 3120 square feet plus porch

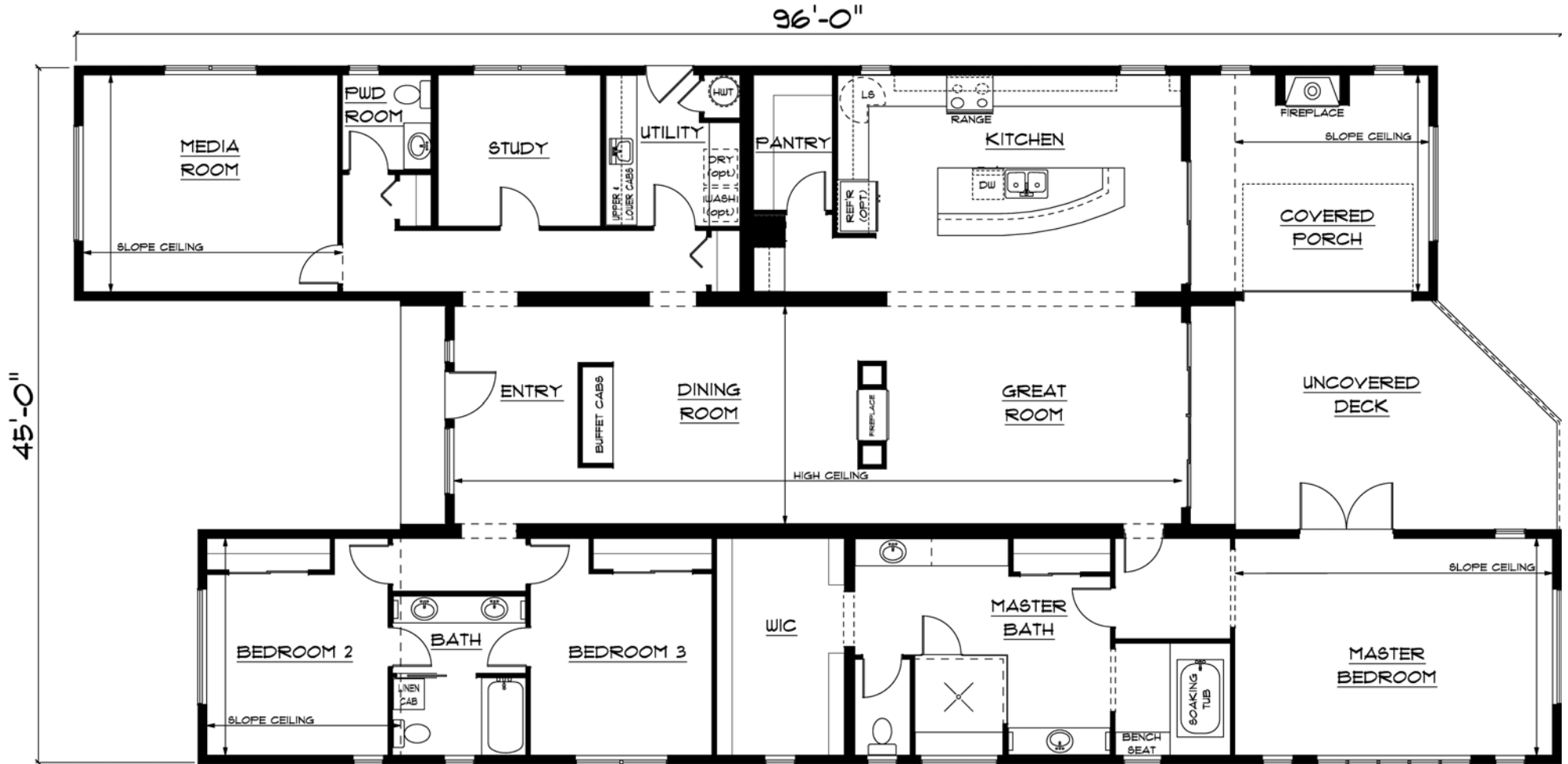
Model Home for Sale at Special Price

You know you're in for a wonderful experience—this extraordinary home takes your breath away as soon as you enter the front door. Warm modern luxury meets gracious livability. Earthy colors and textures are infused with glass tile, polished marble and satin nickel finishes—natural light is captured and maximized. Explore the private zones of the bedrooms, media space and elegant master suite that revolve around the grand central living area with chef's kitchen and enclosed porch. Discover the details built into every corner. It's the unique design you've searched for.



- Featured at 2008 Seattle Home Show
- All finishes and colors selected by award winning designer
- Enclosed porch with glass garage door, tile floor and fireplace
- High volume ceilings with exposed beams and clerestory windows
- Dual sided fireplace in great room
- Den and dedicated media room
- Built-in buffet and butler's pantry with wine cooler
- GE Monogram stainless appliances
- Bamboo hardwood, tile and quality carpets throughout
- Walk-in pantry with custom shelving
- Huge master suite with closet cabinetry, his and hers vanities, custom shower with glass enclosure, Moen's Waterhill vertical spa fixtures, bench seats and soaking tub
- Spacious uncovered deck with cable railing
- Enormous kitchen with curved island, built-in desk and raised eating bar
- Craftsman millwork with full lite frosted glass interior doors—prefinished
- Custom lighting throughout
- Ultra sleek brushed nickel faucets
- Undermount and vessel sinks
- Glass tile accents throughout
- Huntwood's sleek and contemporary cabinetry with glass doors and European hardware
- Marvin clad windows with 8' sliding glass doors and french doors stained to match millwork
- Utility room loaded with cabinetry and sink
- Steel siding—low maintenance, clean lines
- Unique contemporary design includes metal roofing as a design element
- Covered entry at front and rear
- Built-in audio system at great room and media room


TIMBERLAND
HOMES



Remember that all Timberland Floor Plans can be modified.

Two locations to serve you

Mount Vernon Display Village
 800-553-9107 360-428-1910
 507 E Hickox Road
 Mount Vernon, WA 98273



Auburn Display Village
 800-488-5036 253-735-3435
 1201 37th NW
 Auburn, WA 98001

www.timberlandcustomhomes.com