

Madison Park
Display Model 2615 square feet

Model Home for Sale at Special Price

Inspired by nature, the fusion of indoor and outdoor living space is created when this gracious home opens to the expansive courtyard. Entertaining is a breeze when you and your guests move seamlessly from the chef's kitchen to the great room and the sunny space of the courtyard. Cozy up to the outdoor fireplace at twilight. Designed also for privacy, beautifully appointed master suites evoke a feeling of pampered luxury. With its own access to the courtyard, the casita is another special getaway—guest house, game room, office.



- Featured at 2006 Seattle Home Show
- All finishes and colors selected by award winning interior designer
- Courtyard design creates outdoor living space ideal for entertaining, plus covered deck and built-in fireplace
- Casita "little house" for guest quarters, office or game space with bath, cabinetry, beverage center, bar sink
- GE Monogram appliances
- Cherry kitchen cabinetry with slab granite and full height backsplash
- Coffered and box beam ceilings in great room, entry and dining room
- Cherry hardwood, tile and quality carpets
- Laundry room loaded with cherry cabinetry
- Tiled master bath with custom shower, frameless shower door, Moen's Waterhill oil rubbed bronze vertical spa fixtures
- Built-in closet system in master suite
- Fireplace and raised hearth with slate mosaic tile and huge mantle for display
- Built-in entertainment center and shelving flank the fireplace
- Craftsman style interior millwork and solid four panel doors
- Huge kitchen island with butler's pantry
- Sitting room off the junior master suite
- Covered breezeway and wrought iron gate lead to welcoming main entry
- French doors and 10' sliding glass door access the courtyard
- Tile counters and floors in all baths
- Built-in audio system
- Weathervane windows with divided lites and 16 sets of shutters
- Bookcases in great room and kitchen
- Paramount 50 year roofing
- Recessed can lighting
- Two cherry paddle fans

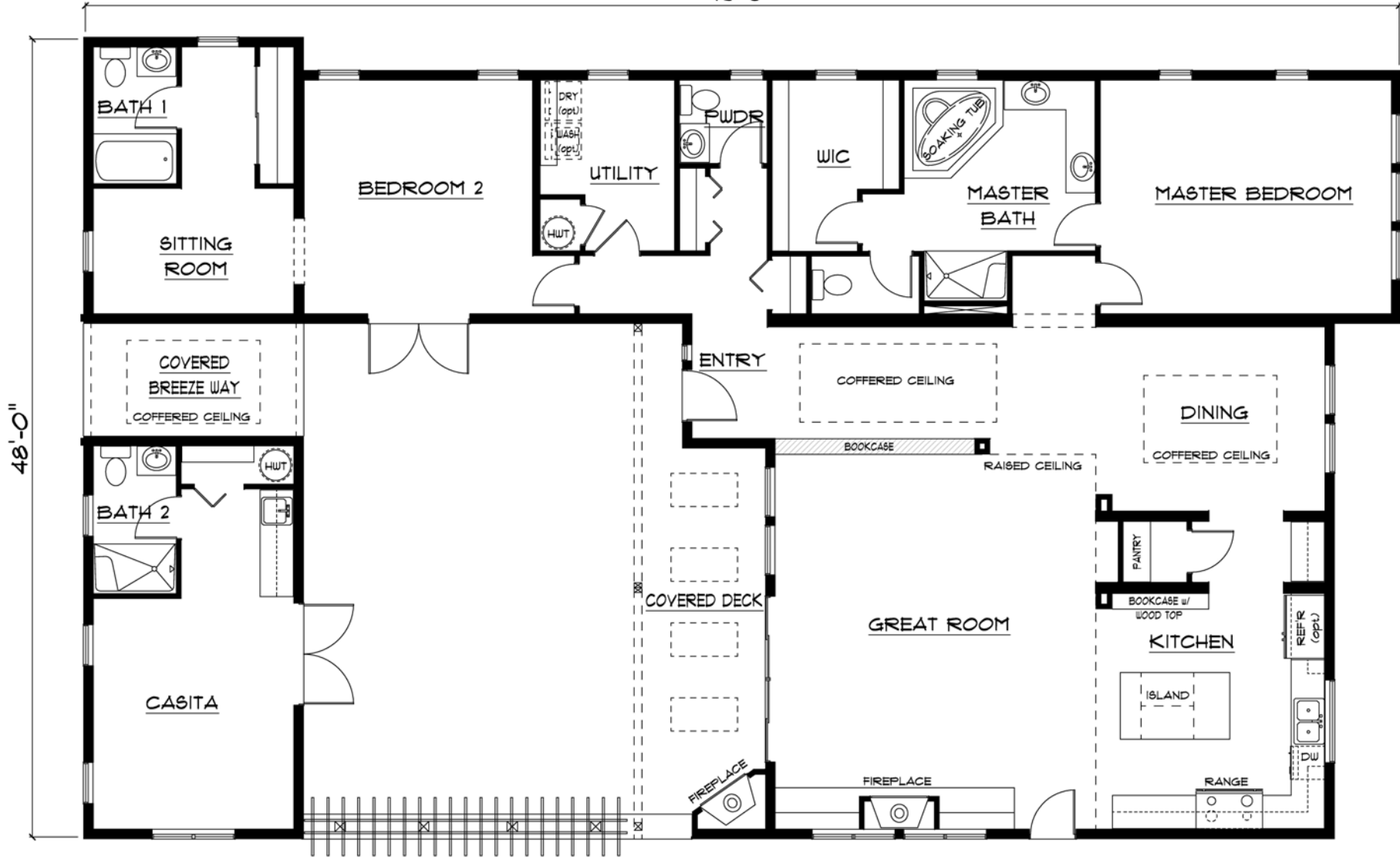


Madison Park

Architectural Collection 2615 square feet



79'-0"



Remember that all Timberland Floor Plans can be modified.

Two locations to serve you

Mount Vernon Display Village
800-553-9107 360-428-1910
507 E Hickox Road
Mount Vernon, WA 98273



Auburn Display Village
800-488-5036 253-735-3435
1201 37th NW
Auburn, WA 98001

www.timberlandcustomhomes.com